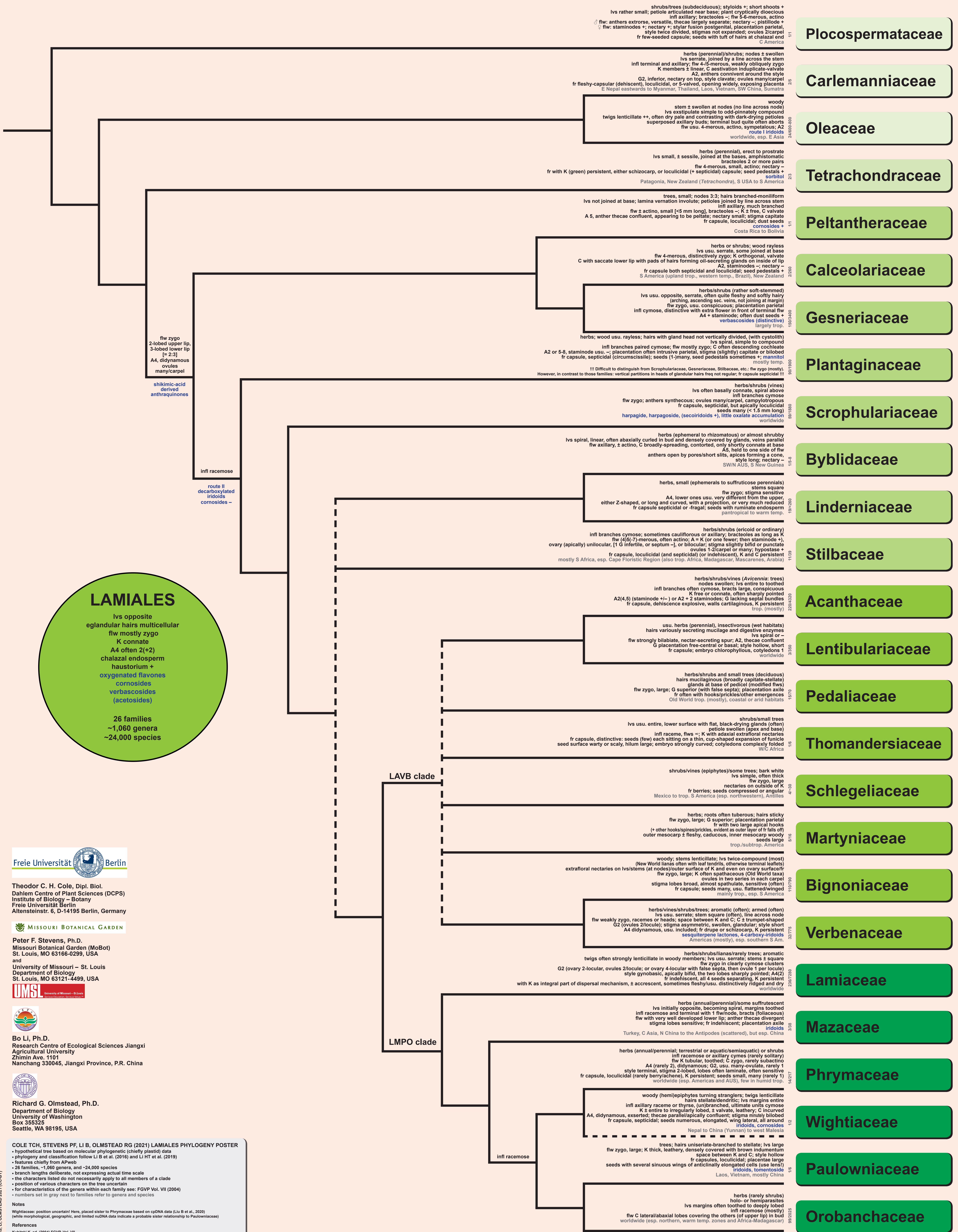
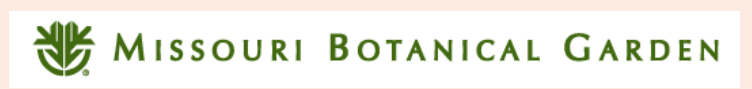


LAMIALES PHYLOGENY POSTER



Theodor C. H. Cole, Dipl. Biol.
 Dahlem Centre of Plant Sciences (DCPS)
 Institute of Biology – Botany
 Freie Universität Berlin
 Altensteinstr. 6, D-14195 Berlin, Germany



Peter F. Stevens, Ph.D.
 Missouri Botanical Garden (MoBot)
 St. Louis, MO 63166-0299, USA
 and
 University of Missouri – St. Louis
 Department of Biology
 St. Louis, MO 63121-4499, USA



Bo Li, Ph.D.
 Research Centre of Ecological Sciences Jiangxi
 Agricultural University
 Zhimin Ave., 1118
 Nanchang 330045, Jiangxi Province, P.R. China



Richard G. Olmstead, Ph.D.
 Department of Biology
 University of Washington
 Box 355325
 Seattle, WA 98195, USA

COLE TCH, STEVENS PF, LI B, OLMSTEAD RG (2021) LAMIALES PHYLOGENY POSTER

- hypothetical tree based on molecular phylogenetic (chiefly plastid) data
- phylogeny and classification follow Li B et al. (2016) and Li HT et al. (2019)
- features chiefly from APweb
- 26 families, ~1,060 genera, and ~24,000 species
- branch lengths deliberate, not expressing actual time scale
- the characters listed do not necessarily apply to all members of a clade
- position of various characters on the tree uncertain
- for characteristics of the genera within each family see: FGVP Vol. VII (2004)
- numbers set in gray next to families refer to genera and species

Notes
 Wightiaceae: position uncertain! Here, placed sister to Phrymaceae based on cpDNA data (Liu B et al., 2020)
 (While morphological, geographic, and limited nuDNA data indicate a probable sister relationship to Paulowniaceae)

References
 Kubitzki K, ed. (2004) FCVP, Vol. VII
 Li B et al. (2016) Sci Reports 6:34343
 Li HT et al. (2019) Nature Plants 5: 461–470
 Liu B et al. (2020) J Syst Evol 68(1): 1–17
 Zhou QM et al. (2014) Plant Syst Evol 300: 2009–2017
 Stevens PF (2001) APweb – www.mobot.org/MOBOT/research/APweb



Acknowledgements and thanks to Julien B. Bachelier and Hartmut H. Hilger